

## > Happy New Year!



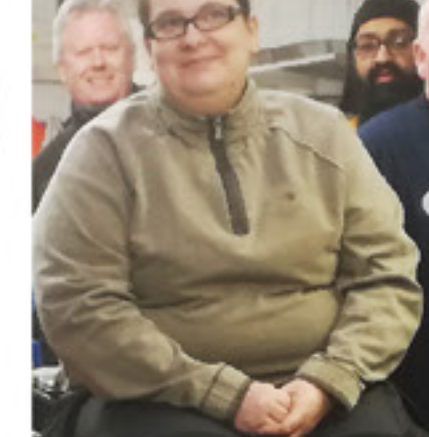
### Welcome to RGS insite issue 20

Our regular newsletter celebrating more than a decade of drilling, keeping you up to date with RGS and industry news.

Rogers Geotechnical Services Ltd are site investigation specialists offering ground investigation and geotechnical services to developers, builders, structural and consulting engineers, architects, insurance companies, local authorities, piling and foundation engineers, private individuals and other geotechnical consultants.

### Happy New Year!

## GREAT FIRST DAY BACK!

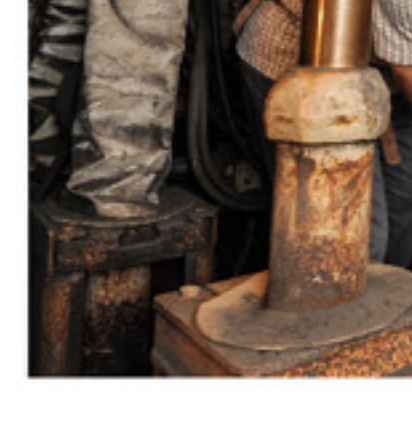


Everyone at RGS kicked off 2017 with a very productive first day back and staged our annual January team meeting.

Throughout the day we delivered H&S refresher training, environmental awareness training and a company performance presentation; all part of maintaining our ISO 9001, 14001 and 18001 accreditations.

RGS Managing Director **Emma Lewis** said,

#### Do you need a phase one environmental desk study report?



**RGS STANDARD**  
**RGS PREMIUM**

Contact us for more details and to discuss your options for this service.

“ These days are a great opportunity to promote good practice and encourage discussion on the only day of the year where everyone is in the building at the same time.

During the afternoon, the fieldworks and lab staff undertook tool box talks on subjects such as manual handling, while the engineers went to the National Coal Mining Museum for the grand tour of the mine.

This was a great chance for them to learn more about coal mining techniques and the knowledge will prove invaluable when we work on sites affected by coal mining legacies.



### INDUSTRY NEWS

#### Rising costs



We experienced a **fast paced** finish to last year but along with the rest of the industry we have started to be hit by **steep cost increases** too.

These are being carefully managed but this press statement, issued by the Chartered Institute of Procurement and Supply, gives useful background and insight into the situation, nationally.

[Click here](#) to read the full statement

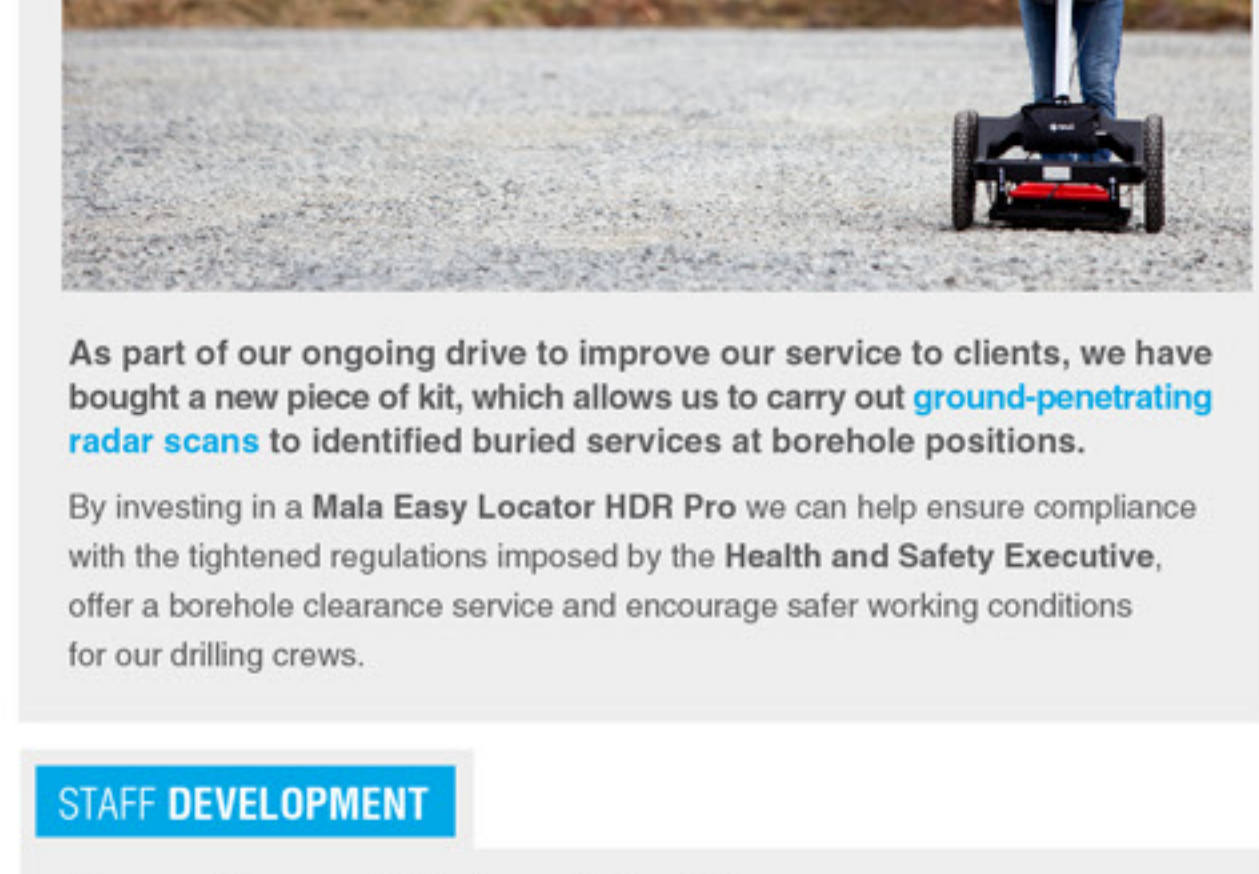
### HEAD OFFICE EVENTS

#### Open day

## JANUARY 31

### Company Open Day

12.00pm - 4.00pm

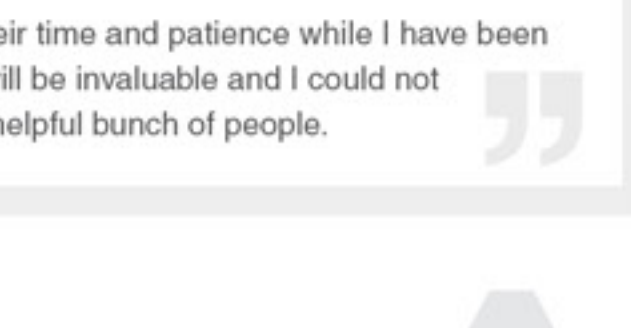
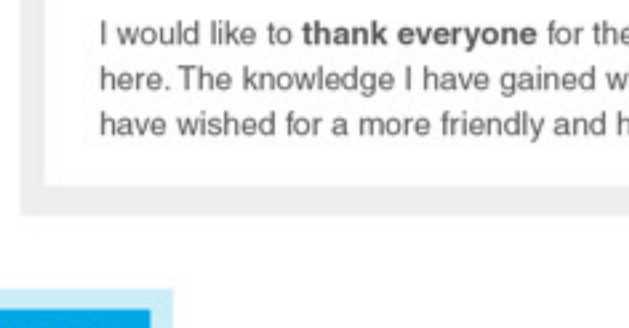


Looking ahead, plans are being finalised for our event on **January 31st**, which will showcase our **new premises** and invitations have gone out to you all.

The programme will run as follows:

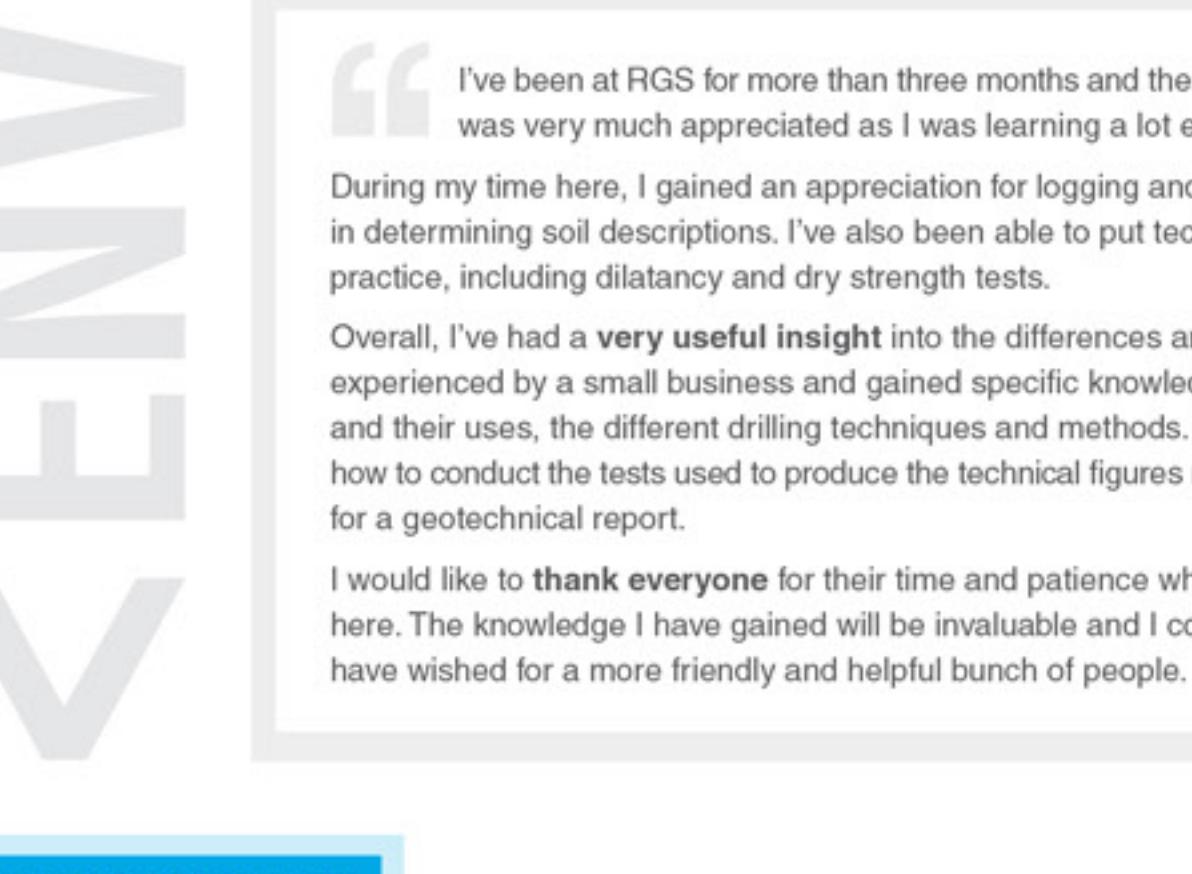
- **12.00pm** ARRIVAL & LUNCH
- **1.00pm** CPD PRESENTATION - **Building Over Difficult Ground**  
Delegate pack produced for departure
- **2.30pm** REFRESHMENTS
- **2.45pm** TOUR OF NEW PREMISES PLUS **Laboratory demonstrations**  
**Hands-on opportunities**  
**Drilling rigs set up**
- **4.00pm** FINISH

**We hope to see you there!**



### JOB FILE

#### Gloucester bound

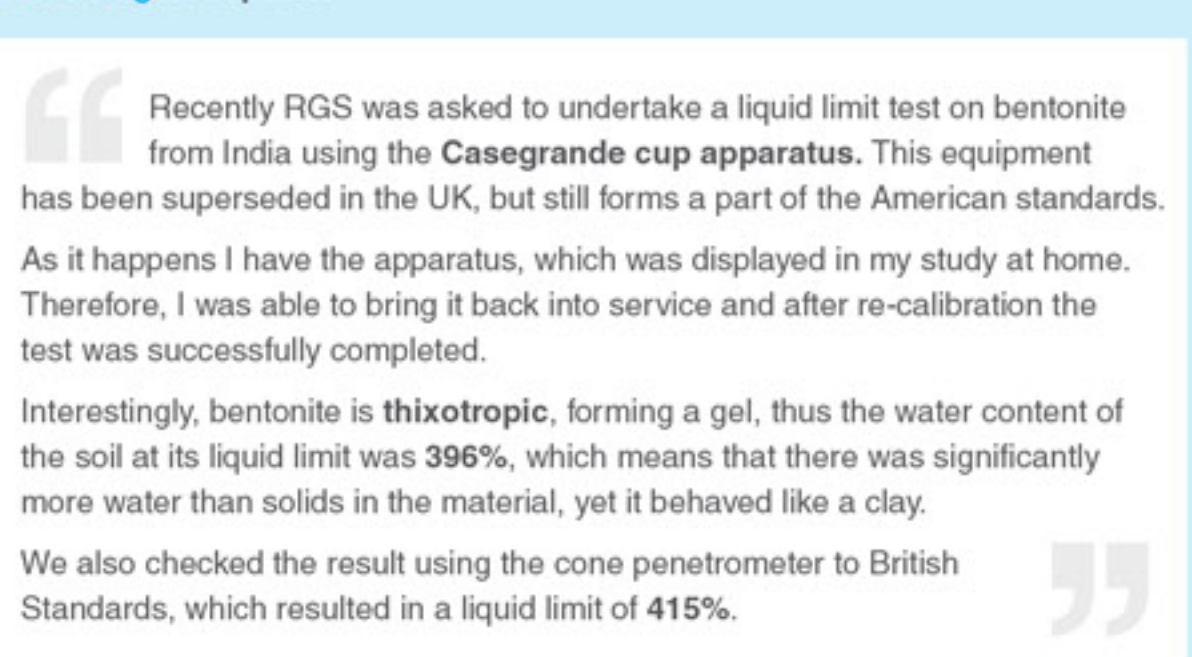


**Alan Gilleard and Rae McCamille**

This latest job involved mobilising four colleagues to Stroud - including our SSSTS (Site Supervisor Safety Training Scheme) accredited supervisor, **Alan Gilleard**.

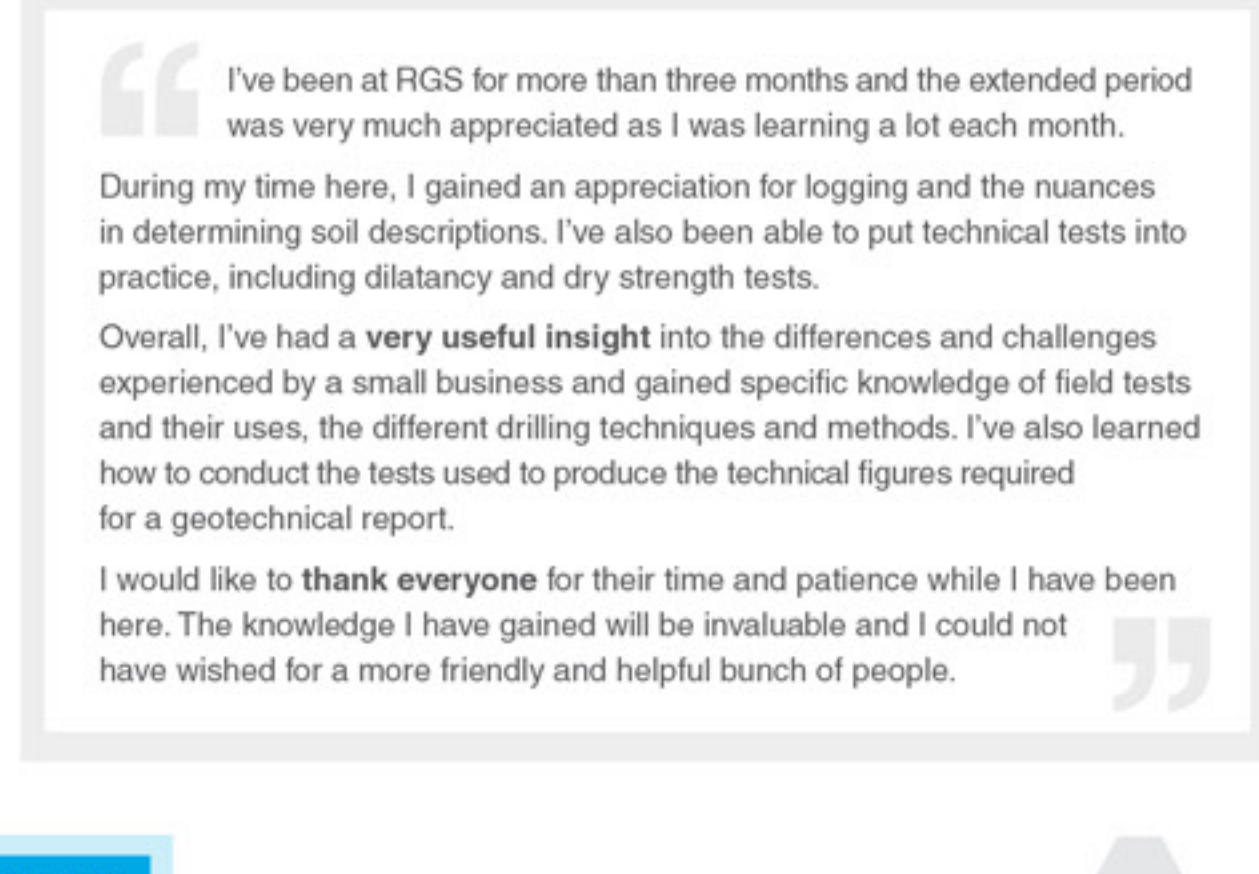
Other features of the job included:

- A **pre-start/tender site visit** by one of our fieldworks team **Rae McCamille** plus installation of a mobile welfare unit
- **GPR survey** of the site to clear the boreholes positions and scan for buried services (see our GPR service below)
- Breaking out hard surfaces and **installing safety barriers** to segregate the work area
- Using an excavator to **create a ramp** for core access on to some of the positions
- Windowless sampling and rotary rock core drilling with our **Dando Terrier** rig which has a detachable mast and is perfect for tight spaces (see above)
- Installation of gas/water monitoring standpipes and subsequent readings by our monitoring team plus a range of **geotechnical testing** in our in-house laboratory and an **interpretive report** inclusive of foundation recommendations.



### NEW INVESTMENT

#### GPR service



As part of our ongoing drive to improve our service to clients, we have bought a new piece of kit, which allows us to carry out **ground-penetrating radar scans** to identified buried services at borehole positions.

By investing in a Mala Easy Locator HDR Pro we can help ensure compliance with the tightened regulations imposed by the Health and Safety Executive, offer a borehole clearance service and encourage safer working conditions for our drilling crews.

### STAFF DEVELOPMENT

#### Goodbye & Good luck!



We've thoroughly enjoyed working with our graduate engineer, **Ross Slater**, who's been on secondment with us from Roger Bullivant Ltd (RBL). Ross joined us in October and is due to return to RBL at the end of this month.

Looking back at his secondment, Ross said,

“ I've been at RGS for more than three months and the extended period was very much appreciated as I was learning a lot each month.

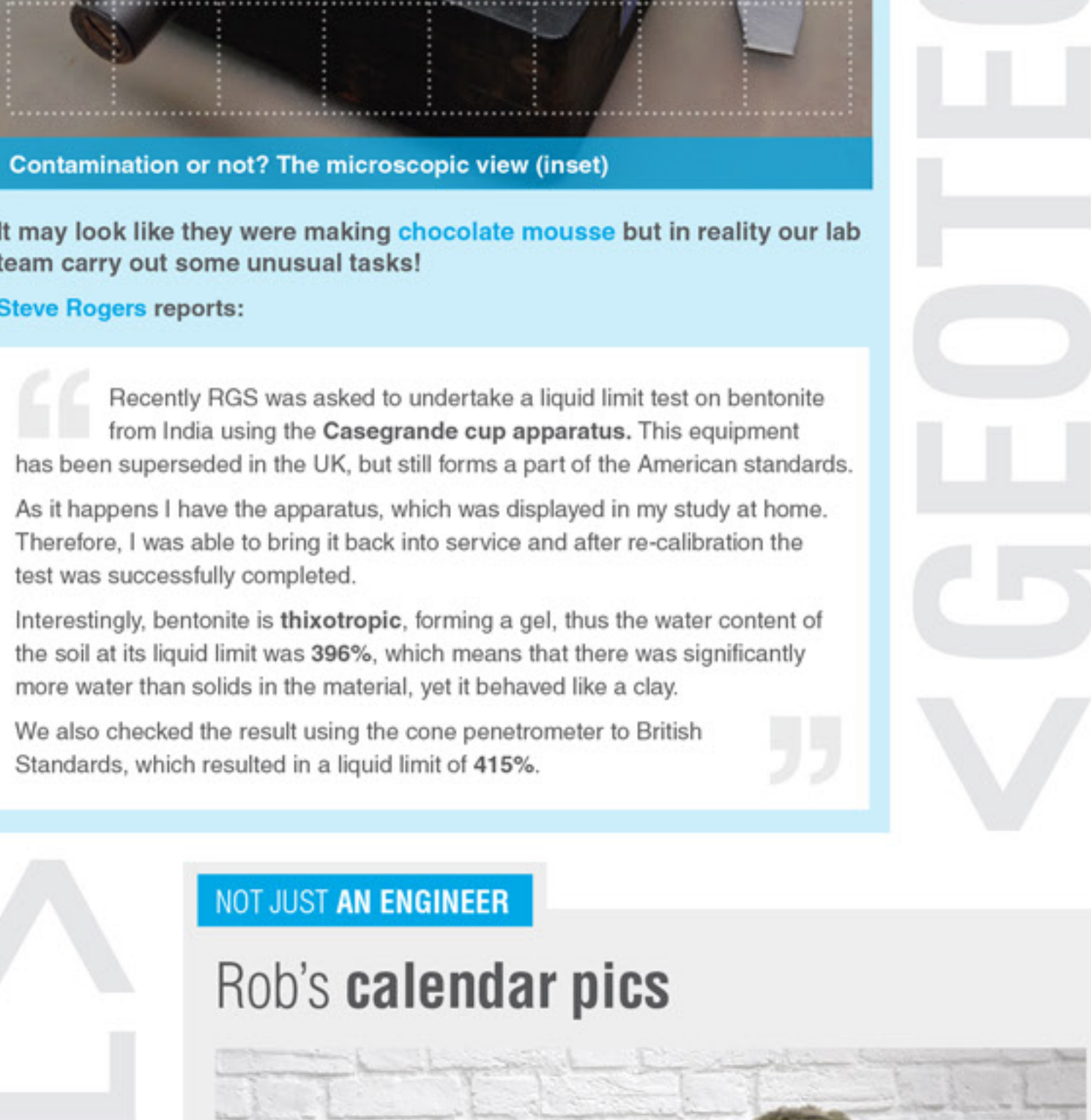
During my time here, I gained an appreciation for logging and the nuances in determining soil descriptions. I've also been able to put technical tests into practice, including dilatancy and dry strength tests.

Overall, I've had a **very useful insight** into the differences and challenges experienced by a **small business** and gained specific knowledge of field tests and their uses, the different drilling techniques and methods. I've also learned how to conduct the tests used to produce the technical figures required for a geotechnical report.

I would like to **thank everyone** for their time and patience I have been here. The knowledge I have gained will be invaluable and I could not have wished for a more friendly and helpful bunch of people.

### RESEARCH / ANALYSIS

#### Chocolate mousse?



**Contamination or not? The microscopic view (inset)**

It may look like they were making **chocolate mousse** but in reality our lab team carry out some unusual tasks!

**Steve Rogers** reports:

“ Recently RGS was asked to undertake a liquid limit test on bentonite from India using the **Casegrande cup apparatus**. This equipment has been superseded in the UK, but still forms a part of the American standards.

As it happens I have the apparatus, which was displayed in my study at home. Therefore, I was able to bring it back into service and after re-calibration the test was successfully completed.

Interestingly, bentonite is **thixotropic**, forming a gel, thus the water content of the soil at its liquid limit was **396%**, which means that there was significantly more water than solids in the material, yet it behaved like a clay.

We also checked the result using the cone penetrometer with British Standards, which resulted in a liquid limit of **415%**.

### NOT JUST AN ENGINEER

#### Rob's calendar pics



Thanks to **Rob Palmer**, one of our engineers, for producing a series of 12-pictures which will be issued throughout the year, giving a month-at-a-view calendar.

These will be issued one-by-one, on the last working day of every month and with our newsletter.

[Click here](#) to download February!

### CLIENT FEEDBACK

#### Talk to us

“ **We are always keen to hear what clients think of our service and welcome feedback from within the industry.**  
We'd love to hear from you.

[Click here](#) to email us your comments

For more information about your investigation requirements please do not hesitate to contact us

**Telephone on 01484 604 354**

[or click here to email us](#)